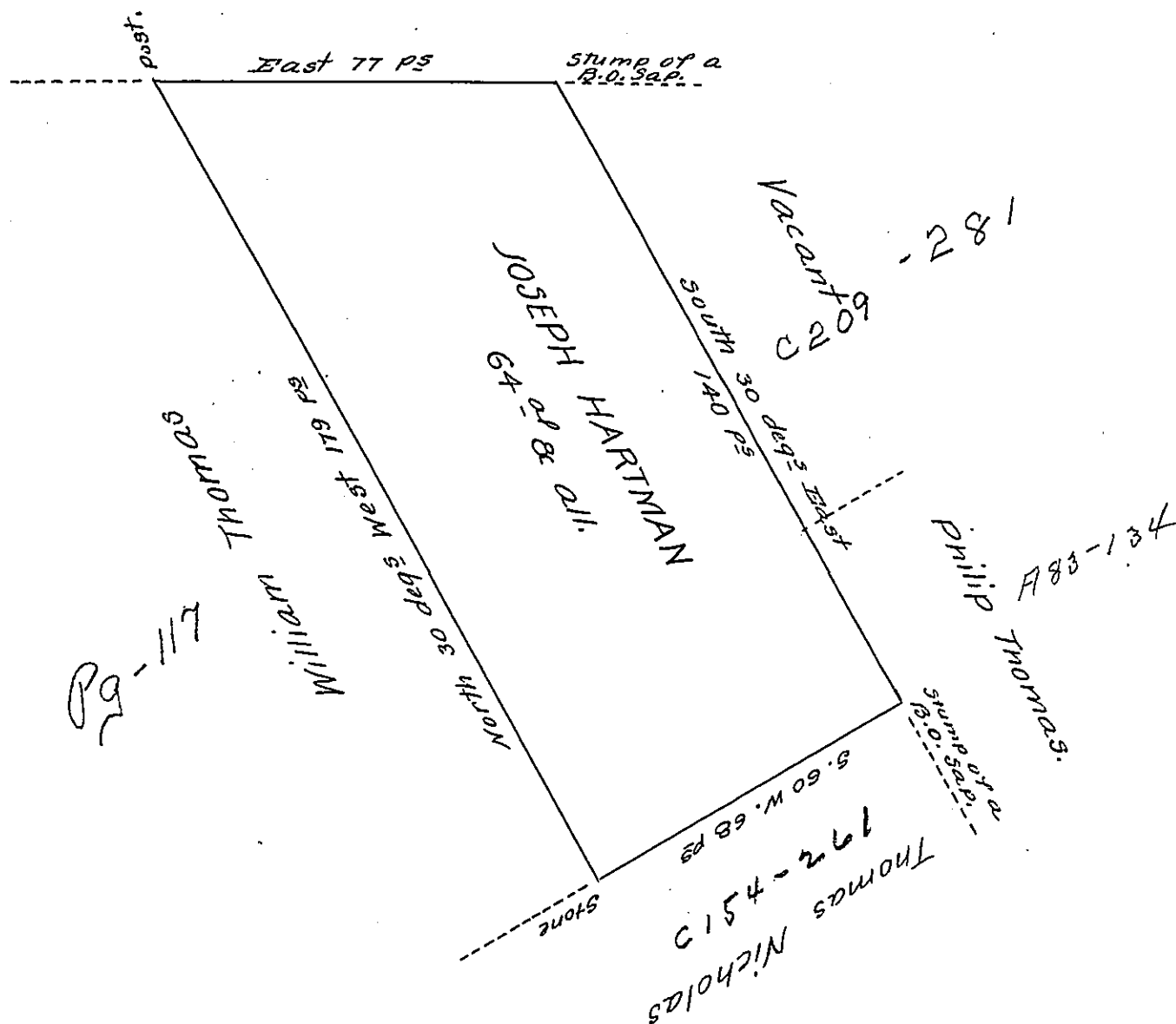


Sephmus Robinson



A Draught of a Tract of Land situate in Cumru Township Lancaster County part of a Tract surveyed for John Thomas by virtue of two Warrants one dated the 26th November 1737. the other 18th Oct^r 1738. But the said John Thomas not complying with the Conditions of the 3^d Warrants the same became void and by Warrant of the 18th April 1744 the said Survey was ordered to be returned &c for the use of William Thomas who assigned his Right to the above Sixty four acres & allowance of 6^{ac} P. C^t for Roads &c^s Surveyed the 3^d Day of February A^o Dⁱ 1748/9

Wm Parsons. -

IN TESTIMONY that the above is a copy of the original remaining on file in the Department of Internal Affairs of Pennsylvania, made conformably to an Act of Assembly approved the 16th day of February, 1833, I have hereunto set my Hand and caused the Seal of said Department to be affixed at Harrisburg, this fifteenth day of March 1907.

Lauch B. Brown
Secretary of Internal Affairs.